

**Lead-free**



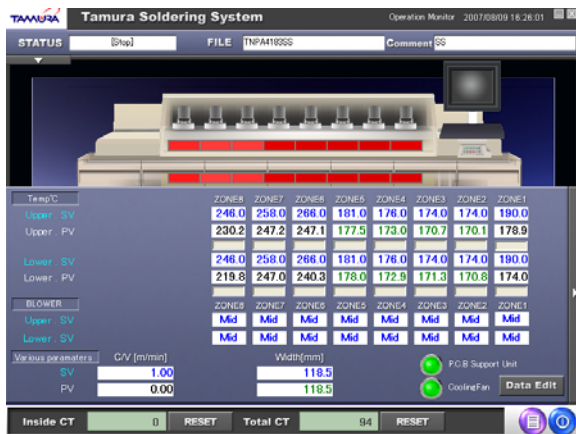
# N2 REFLOW SOLDERING SYSTEMS



*TNP25-538EM - N<sub>2</sub>*

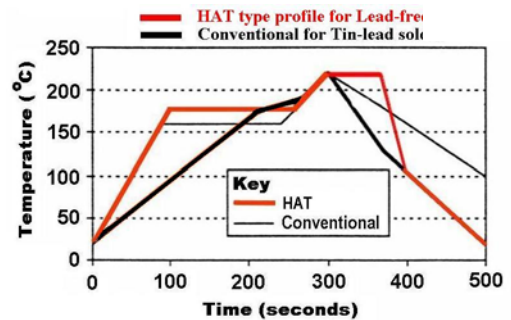
## Tamura Reflow Advantage

- Adjustable air blow speed
- Heater Temp  $\cong$  Blow Air Temp
- Profile Temp  $\cong$  Setting Temp
- Best At performance in its class
- Lowest run cost in its class



Window XP operation

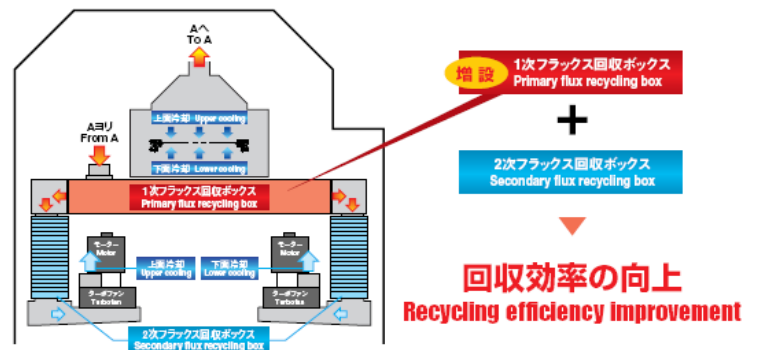
*TNX25-538PM*



Lead-free profile versus Eutectic profile



"Hot Air Blast" heating



## Special Features

- Windows XP software operation
- Lead-free reflow HAT profile optimization
- High volume throughput with all models
- Precision PCB center support - no down time for center support adjustment
- Forced exhaust blower is standard feature
- Superior flux management system with catalyst feature (Pat. Pend) for flux separation
- Integrated profiler
- 3 level adjustable blower speed control, individually in 16 zones

**Lead-free**



# N2 REFLOW SOLDERING SYSTEMS

## Available Models

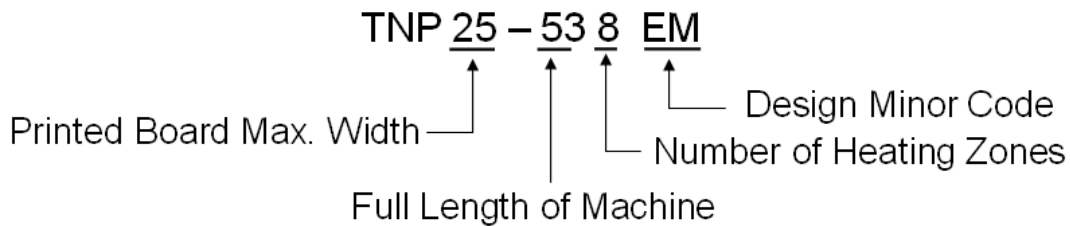
	Model	Heating zones	Cooling zones	Max. PCB width	Range of conv. speed	Electricity consumption	N <sub>2</sub> consumption
N <sub>2</sub>	TNP25-538EM	8	2	250 mm	0.3 ~ 1.7m/min	27 KVA	22 m <sup>3</sup> /hr

## Specification

Power supply	208V, 220V, 480V (Option) 27KVA/75A Save Power Mode
Conveyor speed	0.3 ~ 1.7 m/min
Applicable PCB	Min W 50 mm x L 50 mm Max W 250 mm x L 330 mm
Conveyor	3 mm edge carry standard
Dimension	1,320(W) x 5,300(L) mm
Weight	2.100 Kg
Heaters	Zone 1 3.5 KW Zone 2,3,4,5 2.5KW Zone 6,7,8 3.0KW
Blowers	200 W x 16 pcs 3 levels velocity adjustable
Flux collection	Entrance & exit forced exhaust blower with filtration units

## Safety & Optional Features

- PCB Center support
- Auto width adjustment
- Water cooling unit - N<sub>2</sub>
- O<sub>2</sub> density controller - N<sub>2</sub>
- UPS back up battery
- Curtain beam sensor



## Tamura H.A. Machinery

Head Office:  
9465 Customhouse Plaza, Suite B  
San Diego, CA 92154  
Phone: 619-661-8275  
Fax: 619-661-1122  
E-mail: info@tamura-ha.com

Tennessee Office:  
117 Camellia Trace Drive  
Maryville, TN 37801  
Phone: 865-681-7771  
Fax: 865-681-7771  
E-mail: info@tamura-ha.com

**Lead-free**



# **N2 REFLOW SOLDERING SYSTEMS**



*TNP25-537PM - N<sub>2</sub>*



## **Available Models**

	Model	Heating zones	Cooling zones	Max. PCB width	Range of conv. speed	Electricity consumption	N <sub>2</sub> consumption
N <sub>2</sub>	TNP25-537PM	7	2	250 mm	0.3 ~ 1.7m/min	26 KVA	15 m <sup>3</sup> /hr

## **Specification**

Power supply	208V, 220V, 480V (Option) 26KVA/76A Save Power Mode
Conveyor speed	0.3 ~ 1.7 m/min
Applicable PCB	Min W 50 mm x L 50 mm Max W 250 mm x L 330 mm
Conveyor	4 mm edge carry standard
Dimension	1,250(W) x 5,300(L) mm
Weight	2.100 Kg
Heaters	Zone 1,6,7 3.5 KW Zone 2,3,4,5 2.5KW
Blowers	200 W x 14 pcs 3 levels velocity adjustable
Flux collection	Entrance & exit forced exhaust blower with filtration units